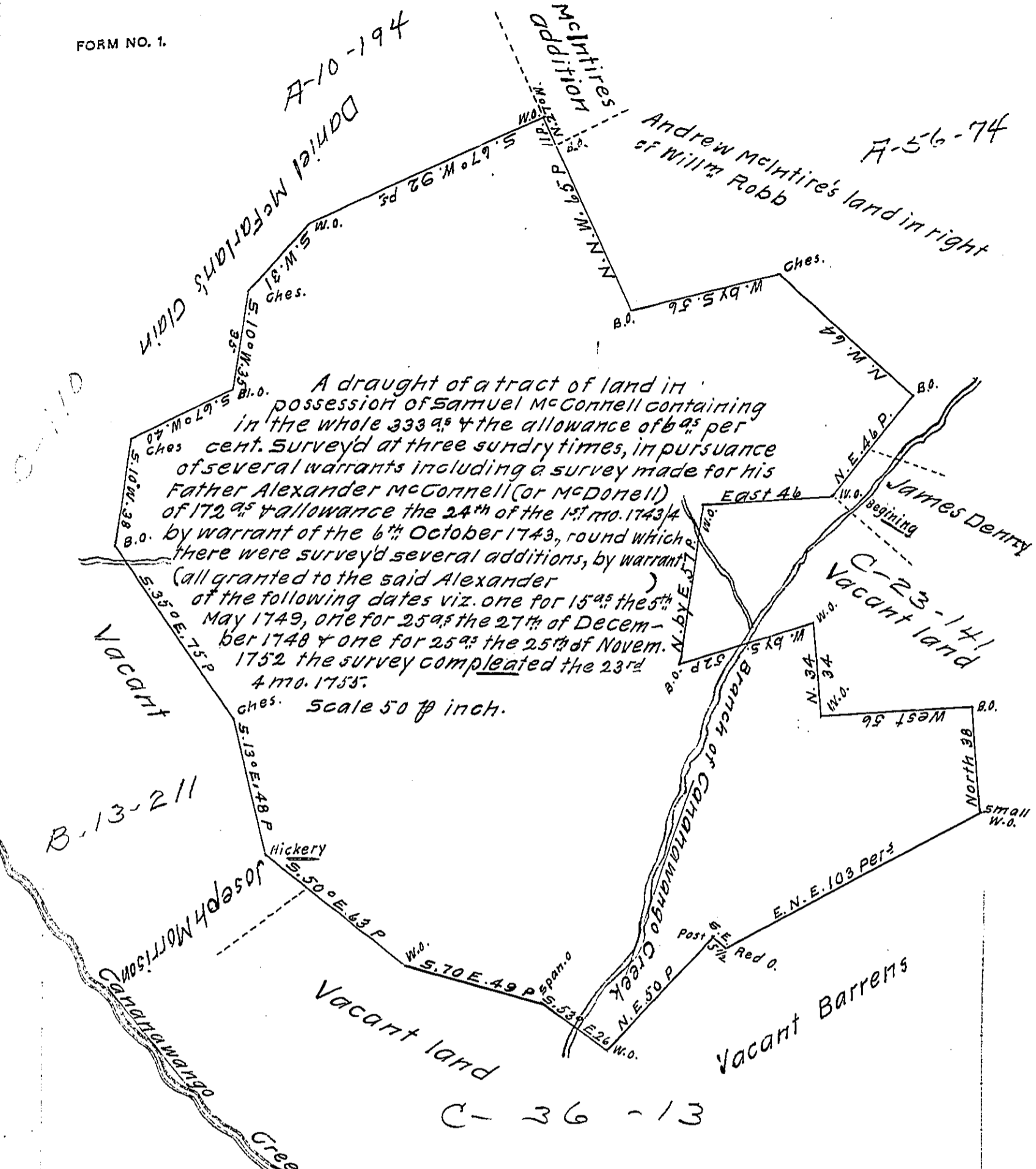


FORM NO. 1.



The tract of land above described Lyes on the east side of Cananawango creek in Drummors township Lancaster County, begins at a corner white oak of a survey made for James Denny & runs thence by the same & by land of Andrew McIntire north east 46 perches to a black oak N.W. 64 P. to a chesnut tree as ϕ the draught above. Survey'd & Certify'd

M³¹² in 43
625 in 49
715 in 52
the wt in 48 not found

18th 3rd mo. 1761 By George Churchman

IN TESTIMONY that the above is a copy of the original remaining on file in the Department of Internal Affairs of Pennsylvania, made conformably to an Act of Assembly approved the 16th day of February, 1833, I have hereunto set my Hand and caused the Seal of said Department to be affixed at Harrisburg, this seventh day of March 1912

Henry Hower
Secretary of Internal Affairs.